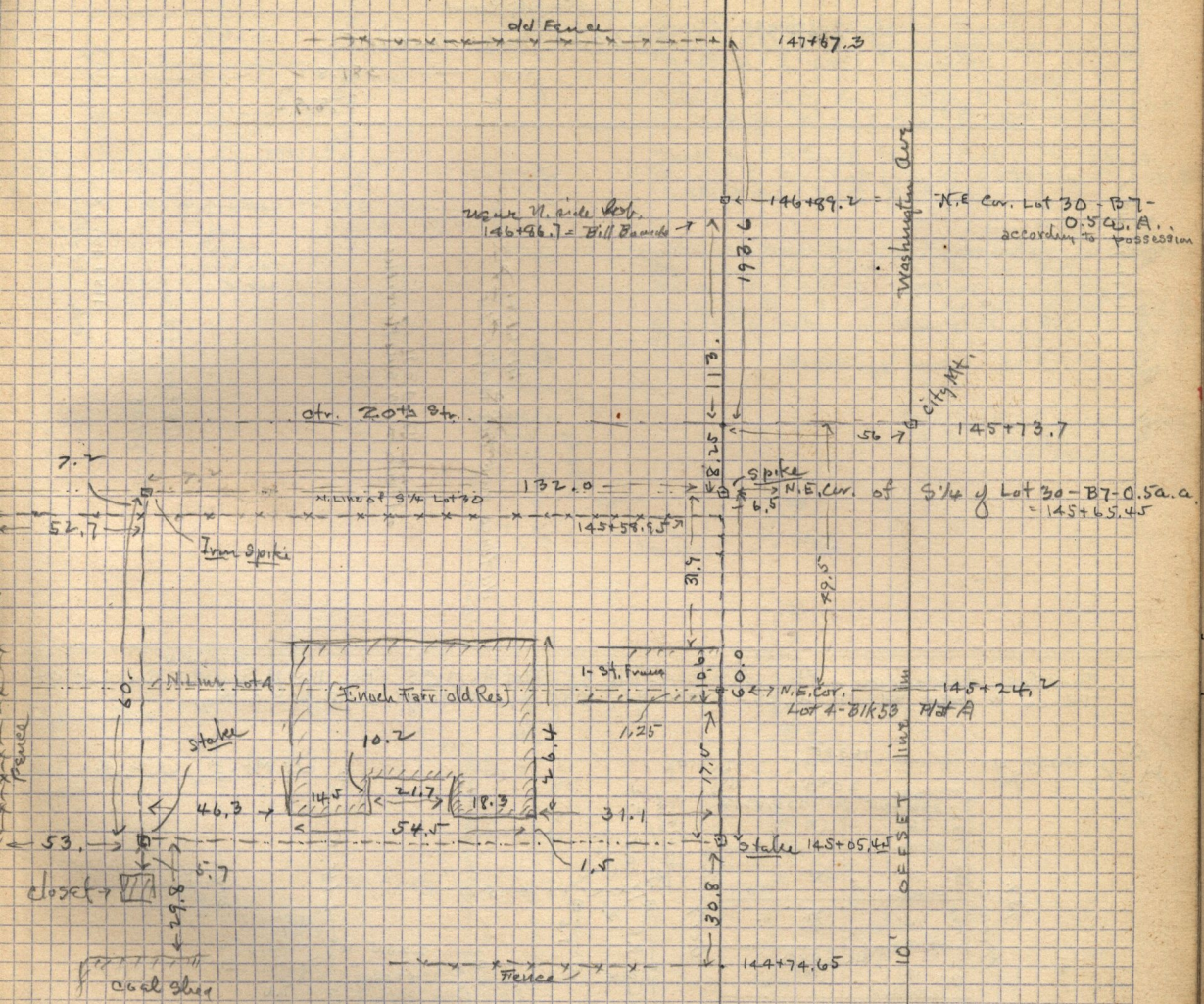


Part of Lot 30 - Blk. 7 - Oden 5 Acre Plat A - and part of Lot 4 - Blk 53 - Plat A. O.C.S.
Beg. at the N.E. cor. of the S 1/4 of Lot 30 - Thence S 60. ft - West 8. Rods - North 60. ft -
East 8. Rods To Beg. B



Survey of the following tract on page (64)

Nov. 15-1910 - Survey for C. A. Ziemer - Pt Lot 30 - Blk 7 - Oden 5 acre plat A,
Bag. 35 ft. S. of N.E. Cor. Lot 30 - S 64. ft W 10 Rods - N. 64. ft. S 10 Rods to beg.

Note! The survey does not agree with City Plat which is in error as to the
frontage of Lot 30 - (The correct frontage being 165 feet)

{ The Station at S. line of Ziemers = 145+87.2 }
" " " " " " = 146+51.2 }